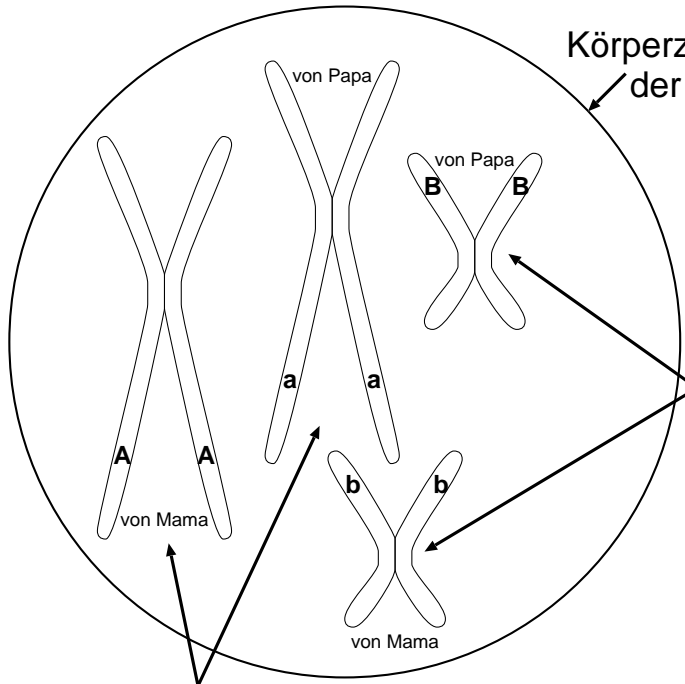


**P: AaBb**



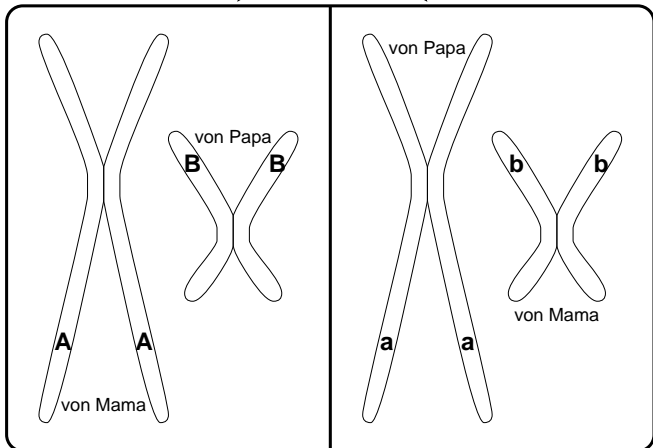
Körperzelle vor der Meiose

<b>Merkmale (Phänotyp)</b>	<b>Merkmalsanlagen (Genotyp)</b>
Nasenform	Allel A = gebogen Allel a = gerade
Augenfarbe	Allel B = stechend grün Allel b = blassgelb

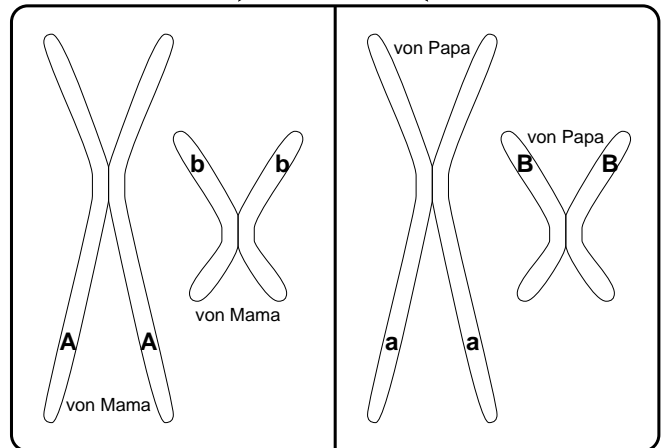
homologes Chromosomen-paar Nummer 2

homologes Chromosomen-paar Nummer 1

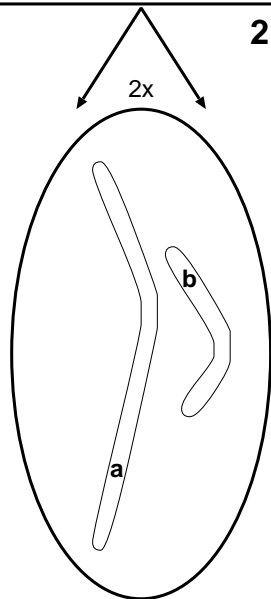
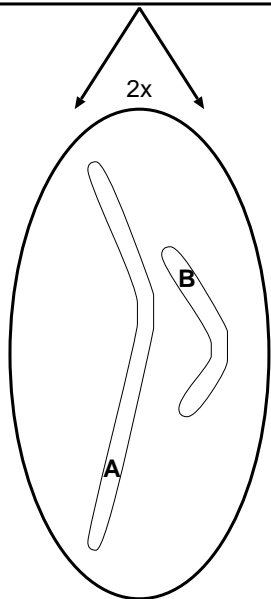
**1. Reifeteilung**  
(Reduktionsteilung diploid zu haploid)



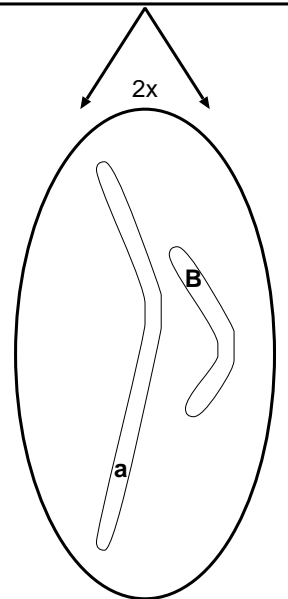
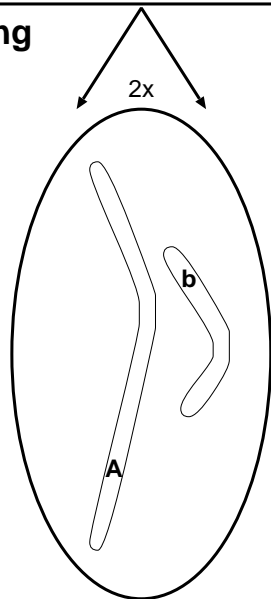
oder:



**2. Reifeteilung**  
(Mitose)



oder:



**G: AB**

**ab**

**Ab**

**aB**